

# RAHBAR MEDICAL & DENTAL COLLEGE

## SOP - FIRE SAFETY AND EVACUATION PLAN



  
Brigadier  
Muhammad Tasawar Sattar (Retd)  
Director Administration  
Rahbar Medical & Dental College

  
Principal  
Zahid Kamal Siddiqui  
Rahbar Medical & Dental College

No. 102/Adm/RMDC/389 Dated 22 Nov 2023.



## Rahbar Medical & Dental College

### SOP - FIRE SAFETY AND EVACUATION PLAN

1. **General.** The possibility of outbreak of fire in Rahbar Medical & Dental College (RMDC) cannot be ruled out; however, with well executed planning, training and awareness, the hazards of fire can be minimized. In the event of fires, suppression equipment needs to be readily accessible to combat these fires. Staff members need to have working knowledge of how to use the equipment and to avoid panic. The last resort, failing the ability to completely suppress the fire, is to evacuate the facility. Moving all staff members and students out of danger safely as soon as possible.
2. **Aim.** To avoid occurrence of fire and in case of fire outbreak to ensure the students / staff safety and minimize damage through a well-coordinated plan.
3. **Key Principles.** It is important to recognize that staff attention to detail and processes will not be optimal in an evacuation scenario. To that end, understanding following key principles will help staff members make good decisions during a chaotic event:-
  - a. Full evacuation of a College should generally be considered as a last resort when mitigation or other emergency response efforts are not expected to maintain a safe care environment.
  - b. Safety is always the primary concern.
  - c. Simplicity is key; the staff will need a simple plan to follow in an emergency.
  - d. Flexibility is vital because the procedures must be adaptable to a variety of situations.
  - e. Self-sufficiency at the all level is important and staff at every level must know immediately what to do in their area.
  - f. It may be necessary to evacuate students/staff to the designated assembly area located away from the main building.

- g. Inform the firefighting team to contain the fire.
- i. The staff/students will stay in the assembly area until the situation become normal.

4. **Execution**

a. **Outline Plan**

- (1) Firefighting parties will be detailed on monthly basis and duties of different parties to be reflected in the College part one order in first week of every month.
- (2) The members of each party to be made conversant with their responsibilities, and the specific task they have to perform in case of outbreak of fire. The awareness to be inculcated through an organized program of lectures.
- (3) Fire Safety Officer will maintain the inventory of firefighting equipment and ensure its functional status through a schedule program of periodic checks.
- (4) Staff/students will be evacuated to a safe designated place if necessary.
- (5) The Fire Safety and Evacuation Plan will be reviewed every year to cater for the additional requirement.

b. **Fire Fighting Equipment**

- (1) **Inventory.** Inventory list of firefighting equipment is at **Anx A.**
- (2) **Distribution.** Distribution of fire extinguisher is at **Anx B.**

- c. **Firefighting Points.** Firefighting points have been located at under mentioned location for optimal coverage of entire College premises in general and high risk areas in particular:-

**Place**

- (1) Main gate
- (2) Main generators area
- (3) Cook house boys hostel
- (4) Cook house girls hostels

- d. **High Risk / Fire Prone Areas.** Following areas are identified as high-risk areas at RMDC:-

- (1) Main generators area
- (2) Cook house boys hostel
- (3) Cook house girls hostel
- (4) IT Room

- e. **Assembly Area.** '*Polo Ground*' in front of RMDC.

- f. **Firefighting Teams and their Responsibilities**

- (1) **Cordon Party**

- (a) **Composition**

- |      |              |   |   |
|------|--------------|---|---|
| i.   | Inspr        | - | 1 |
| ii.  | NCO          | - | 1 |
| iii. | Sldr / Staff | - | 8 |

- (b) **Responsibilities**

- i. To isolate and protect the affected area by establishing cordon.
- ii. To prevent from the entry of unauthorized persons in the affected area.
- iii. Guard / QRF from Garrison Security will immediately join the cordon party.
- iv. Dress – Camouflage Combat Dress (CCD) or any working dress wearing at the time of incident.

- (c) **Notification.** Part-I order will be published on Weekly basis.

- (2) **Fire Fighting Party**

- (a) **Composition**

- |     |       |   |   |
|-----|-------|---|---|
| i.  | JCO   | - | 1 |
| ii. | Staff | - | 9 |



(b) **Responsibilities**

- i. To combat the fire by using available firefighting equipment.
- ii. To collect the firefighting equipment / fire extinguisher available at firefighting points / nearby location and rushed towards the place of fire.
- iii. Adm JCO will coordinate and distribute the members of teams in different tasks
- iv. Water will not be used on petrol fire
- v. CO2 cylinders will be used for extinguishing the fire occurred due to electric short circuiting.
- vi. Proper firefighting dress i.e Boots ankle, leather gloves and helmet etc to be used during firefighting.

(c) **Notification**. Part-I order will be published on Weekly basis.

(3) **Salvage Party**(a) **Composition**

- i. JCO - 1
- ii. Sldr / Staff - 9

(b) **Responsibilities**

- i. Immediately rush towards the place of fire and save persons and property from fire hazards.
- ii. To rescue persons and material from the ravages of the fire.
- iii. To carry stretchers and medical haversack if danger to life is involved.
- iv. Unnecessary danger to lives to be avoided.

(4) Rescue Party(a) Composition

- i. JCO - 1
- ii. Sldr / Staff - 9

(b) Responsibilities

- i. Rescue party is responsible to provide first aid to the effected individuals.
- ii. Rescue party is also responsible to provide first aid to the serious patients.

5. Responsibilities. Action to be taken at the outbreak of fire:-

- a. By the Person Discovering the Fire. Will shout "AAG AAG" and keep on shouting "AAG AAG" until assistance arrives. He will also blow the whistle attached with fire extinguisher already placed in all departments and at the same time will attempt to put the fire out with the available equipment. Anyone else who listens to him will also shout "AAG AAG" so that the message is propagated without any delay.
- b. By the Persons Arriving Next at the Place. He will inform safety officer immediately to sound the alarm and help to put the fire out.
- c. Action by the Safety Officer.
  - (1) Will immediately inform the Gar Control Room
  - (2) Will call the Fire Brigade and Rescue 1122.
  - (3) Will take over the charge of firefighting at the place of fire and assist Adm JCO in management to extinguish the fire.
- d. Action by the Rest of the Staff RMDC.
  - (1) All staff gather in designated assembly area
  - (2) Head count will be made
  - (3) If any wounded person is rescued, will be shifted immediately to first aid/treatment
  - (4) All will be allowed to go to their respective areas if the situation declared normal.

- e. **Emergency Evacuation Plan (EEP)**. Emergency evacuation plan (EEP) includes the action to be taken by all staff in the event of fire and the arrangements for calling the fire brigade and evacuation of the staff and students from the RMDC to assembly area.
- f. **Purpose of EEP**. To facilitate and to organize the staff evacuation during emergency and fire.
  - (1) **Layout of the EEP**. It is mandatory for all staff/student of RMDC to be familiar with the layout plan of the building. RMDC has multiple exits which averts the possibility of stampede or blockage.
  - (2) Evacuation plan for each floor has been displayed on the respective floor and it is the departmental responsibility to ensure that the staff /students working in their respective department is conversant with it. The evacuation plan has been organized to ensure move of the staff/student to safe area through the shortest possible route. Layout of the evacuation plan is as following:-
    - (a) Ground Floor - **Anx - C**
    - (b) First Floor - **Anx - D**
  - (3) Emergency fire exit signs and exit route indicators have been displayed for the convenience of visitors unfamiliar with Rahbar Medical & Dental College (RMDC) evacuation plan.
  - (4) Assembly area has been clearly demarcated and proper signage installed at the site. To avert chaos the location of the assembly area should be known to all staff/students.

6. **Fire Drills**. Fire drills are a critical tool to maintain the readiness of staff to respond to a fire emergency and to minimize the likelihood of injury to staff/students. Fire safety officer is responsible for the conduct of these drills. These drills will be conducted bi-annually. Preferably the drills will be conducted unannounced to ascertain the level of preparedness. Following will be ensured to accrue maximum benefit from this activity:-



- a. Each drill will be evaluated to assess fire response competency and identify opportunities for improvement.
- b. Staff/students will be questioned about their role and activities during a fire emergency.
- c. The acronym "**RACE**" is used to educate staff on the appropriate response to a fire. Details are as following:-
  - (1) **Rescue** the affectless immediately
  - (2) **Activate** the nearest alarm by pulling fire alarm
  - (3) **Contain** close all doors and windows to contain smoke and fire
  - (4) **Extinguish**, the fire
- d. The acronym "**PASS**" is used to educate staff/students how to use the fire extinguisher on fire. Details are as following:-
  - (1) P - Pull the pin
  - (2) A – Aim at the base of fire
  - (3) S – Squeeze the liver
  - (4) S – Sweep the nozzle side by side to extinguish the fire

7. **Conclusion.** With efficient and timely response of all members, damages can be curtailed to bear minimum. A collaborated team works with systematic operation can achieve desired objectives through peace time rehearsals and awareness.



INVENTORY OF FIRE FIGHTING EQUIPMENT

1.	Fire Extinguisher	-	75
2.	Fire Bucket	-	17
3.	Fire Salvage	-	06
4.	Alarm Bell	-	01
5.	Fire Hook 12' Wooden	-	06
6.	Fire Stand	-	04
7.	Axe	-	02
8.	Spades	-	04
9.	Grub-axe	-	04

SUMMARY OF FIRE EXTINGUISHERS

3 Kg	-	28
4 Kg	-	23
5 Kg	-	06
6 Kg	-	12
25 Kg	-	06
<b>Total:</b>		<b>75</b>

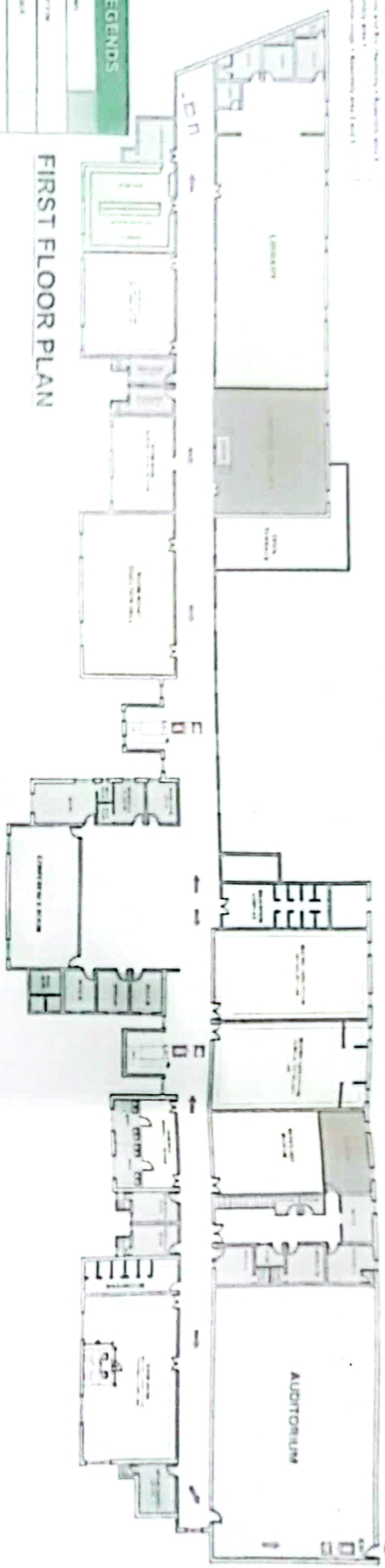
# EVACUATION PLAN INCASE OF FIRE - RMDC LAHORE



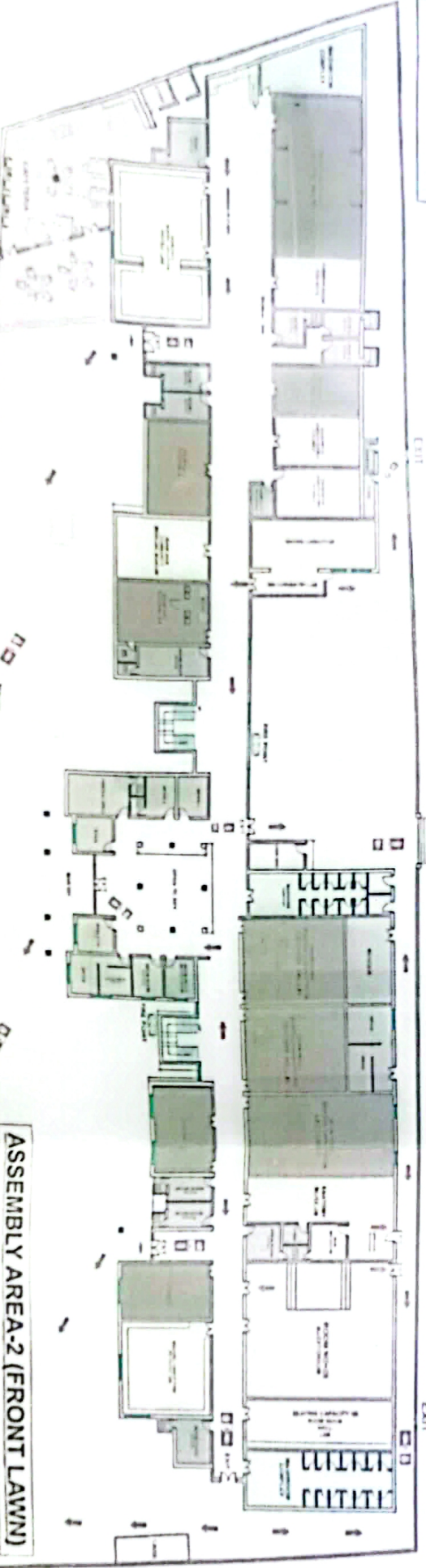
Assembly Area 1: Parking Area between main gate and Assembly Area 1 (Main Gate).  
 Assembly Area 2: Main Gate.  
 Assembly Area 3: Main Gate.  
 Assembly Area 4: Main Gate.  
 Assembly Area 5: Main Gate.  
 Assembly Area 6: Main Gate.  
 Assembly Area 7: Main Gate.  
 Assembly Area 8: Main Gate.  
 Assembly Area 9: Main Gate.  
 Assembly Area 10: Main Gate.  
 Assembly Area 11: Main Gate.  
 Assembly Area 12: Main Gate.  
 Assembly Area 13: Main Gate.  
 Assembly Area 14: Main Gate.  
 Assembly Area 15: Main Gate.  
 Assembly Area 16: Main Gate.  
 Assembly Area 17: Main Gate.  
 Assembly Area 18: Main Gate.  
 Assembly Area 19: Main Gate.  
 Assembly Area 20: Main Gate.  
 Assembly Area 21: Main Gate.  
 Assembly Area 22: Main Gate.  
 Assembly Area 23: Main Gate.  
 Assembly Area 24: Main Gate.  
 Assembly Area 25: Main Gate.  
 Assembly Area 26: Main Gate.  
 Assembly Area 27: Main Gate.  
 Assembly Area 28: Main Gate.  
 Assembly Area 29: Main Gate.  
 Assembly Area 30: Main Gate.  
 Assembly Area 31: Main Gate.  
 Assembly Area 32: Main Gate.  
 Assembly Area 33: Main Gate.  
 Assembly Area 34: Main Gate.  
 Assembly Area 35: Main Gate.  
 Assembly Area 36: Main Gate.  
 Assembly Area 37: Main Gate.  
 Assembly Area 38: Main Gate.  
 Assembly Area 39: Main Gate.  
 Assembly Area 40: Main Gate.  
 Assembly Area 41: Main Gate.  
 Assembly Area 42: Main Gate.  
 Assembly Area 43: Main Gate.  
 Assembly Area 44: Main Gate.  
 Assembly Area 45: Main Gate.  
 Assembly Area 46: Main Gate.  
 Assembly Area 47: Main Gate.  
 Assembly Area 48: Main Gate.  
 Assembly Area 49: Main Gate.  
 Assembly Area 50: Main Gate.  
 Assembly Area 51: Main Gate.  
 Assembly Area 52: Main Gate.  
 Assembly Area 53: Main Gate.  
 Assembly Area 54: Main Gate.  
 Assembly Area 55: Main Gate.  
 Assembly Area 56: Main Gate.  
 Assembly Area 57: Main Gate.  
 Assembly Area 58: Main Gate.  
 Assembly Area 59: Main Gate.  
 Assembly Area 60: Main Gate.  
 Assembly Area 61: Main Gate.  
 Assembly Area 62: Main Gate.  
 Assembly Area 63: Main Gate.  
 Assembly Area 64: Main Gate.  
 Assembly Area 65: Main Gate.  
 Assembly Area 66: Main Gate.  
 Assembly Area 67: Main Gate.  
 Assembly Area 68: Main Gate.  
 Assembly Area 69: Main Gate.  
 Assembly Area 70: Main Gate.  
 Assembly Area 71: Main Gate.  
 Assembly Area 72: Main Gate.  
 Assembly Area 73: Main Gate.  
 Assembly Area 74: Main Gate.  
 Assembly Area 75: Main Gate.  
 Assembly Area 76: Main Gate.  
 Assembly Area 77: Main Gate.  
 Assembly Area 78: Main Gate.  
 Assembly Area 79: Main Gate.  
 Assembly Area 80: Main Gate.  
 Assembly Area 81: Main Gate.  
 Assembly Area 82: Main Gate.  
 Assembly Area 83: Main Gate.  
 Assembly Area 84: Main Gate.  
 Assembly Area 85: Main Gate.  
 Assembly Area 86: Main Gate.  
 Assembly Area 87: Main Gate.  
 Assembly Area 88: Main Gate.  
 Assembly Area 89: Main Gate.  
 Assembly Area 90: Main Gate.  
 Assembly Area 91: Main Gate.  
 Assembly Area 92: Main Gate.  
 Assembly Area 93: Main Gate.  
 Assembly Area 94: Main Gate.  
 Assembly Area 95: Main Gate.  
 Assembly Area 96: Main Gate.  
 Assembly Area 97: Main Gate.  
 Assembly Area 98: Main Gate.  
 Assembly Area 99: Main Gate.  
 Assembly Area 100: Main Gate.

LEGENDS
1. Assembly Area
2. Assembly Area
3. Assembly Area
4. Assembly Area
5. Assembly Area
6. Assembly Area
7. Assembly Area
8. Assembly Area
9. Assembly Area
10. Assembly Area
11. Assembly Area
12. Assembly Area
13. Assembly Area
14. Assembly Area
15. Assembly Area
16. Assembly Area
17. Assembly Area
18. Assembly Area
19. Assembly Area
20. Assembly Area
21. Assembly Area
22. Assembly Area
23. Assembly Area
24. Assembly Area
25. Assembly Area
26. Assembly Area
27. Assembly Area
28. Assembly Area
29. Assembly Area
30. Assembly Area
31. Assembly Area
32. Assembly Area
33. Assembly Area
34. Assembly Area
35. Assembly Area
36. Assembly Area
37. Assembly Area
38. Assembly Area
39. Assembly Area
40. Assembly Area
41. Assembly Area
42. Assembly Area
43. Assembly Area
44. Assembly Area
45. Assembly Area
46. Assembly Area
47. Assembly Area
48. Assembly Area
49. Assembly Area
50. Assembly Area
51. Assembly Area
52. Assembly Area
53. Assembly Area
54. Assembly Area
55. Assembly Area
56. Assembly Area
57. Assembly Area
58. Assembly Area
59. Assembly Area
60. Assembly Area
61. Assembly Area
62. Assembly Area
63. Assembly Area
64. Assembly Area
65. Assembly Area
66. Assembly Area
67. Assembly Area
68. Assembly Area
69. Assembly Area
70. Assembly Area
71. Assembly Area
72. Assembly Area
73. Assembly Area
74. Assembly Area
75. Assembly Area
76. Assembly Area
77. Assembly Area
78. Assembly Area
79. Assembly Area
80. Assembly Area
81. Assembly Area
82. Assembly Area
83. Assembly Area
84. Assembly Area
85. Assembly Area
86. Assembly Area
87. Assembly Area
88. Assembly Area
89. Assembly Area
90. Assembly Area
91. Assembly Area
92. Assembly Area
93. Assembly Area
94. Assembly Area
95. Assembly Area
96. Assembly Area
97. Assembly Area
98. Assembly Area
99. Assembly Area
100. Assembly Area

FIRST FLOOR PLAN



ASSEMBLY AREA-3 (POLO GROUND)



GROUND FLOOR PLAN

ASSEMBLY AREA-1 (MAIN CAR PARKING)

ASSEMBLY AREA-2 (FRONT LAWN)



# EVACUATION PLAN IN CASE OF EMERGENCY - RMDC LAHORE



FIRST FLOOR PLAN

LEGENDS	
[Green Box]	LIBRARY
[Light Green Box]	LECTURE HALLS
[Yellow Box]	CONFERENCE ROOM
[Pink Box]	OFFICE & WORKSHOP
[Light Blue Box]	LABORATORY & IT LAB
[Dark Blue Box]	CAFETERIA, COMMON ROOMS, ROOM GROUP
[Light Blue Box]	LABORATORY, SPECIALTY HALL
[Dark Blue Box]	RESTROOM

ASSEMBLY AREA (POLO GROUND)



GROUND FLOOR PLAN